



SPYRUS®

TRUSTED MOBILITY SOLUTIONS

En-Sign™

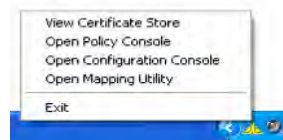
Security Device Management Software

En-Sign™ provides utilities for managing security devices and digital certificates. It integrates the Hydra Privacy Card® Series II, Rosetta® Smart Card and USB, LYNKS Series II HSM, and Department of Defense Common Access Card (CAC) with certificate-enabled applications such as smart card logon, e-mail digital signature and encryption, Virtual Private Network, and SSL authentication.

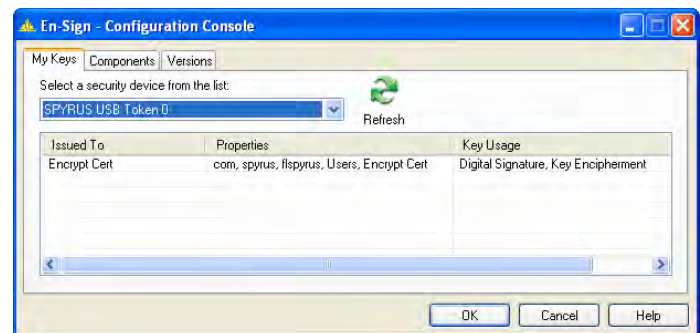
En-Sign is designed for the enterprise, but it is also perfect for small businesses and individual users. Settings and configurations affect the local machine only. En-Sign can be installed on a single computer or deployed remotely over an enterprise network by using Group Policy. Consoles and utilities are easy to use and require no special IT assistance.

Features

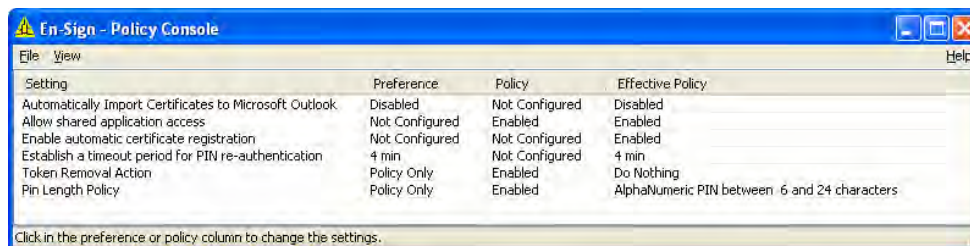
- ▲ Supports high-assurance cryptographic algorithms for AES, SHA-2, and ECC, including the U.S. Government Suite B standard.
- ▲ Implements two-factor authentication (PIN and token) for secure access to data on the certificate.
- ▲ Start consoles and utilities through easily accessible taskbar menu.



- ▲ Configuration Console manages security devices, keys, and digital certificates. Generate keys, set or change Personal Identification Number (PIN), and import or register digital certificates with one easy-to-use interface.



- ▲ Policy Console manages policies for a single computer. Computer administrators and local users coordinate permissions to set policies for managing digital certificates, devices, and application access.



- ▲ Mapping Utility manages hardware connections between the computer and security devices connected to it.

Technical Specifications

Minimum Hardware Requirements

- ▲ Pentium II 233 MHz processor
- ▲ 10 MB free disk space
- ▲ 128 MB memory

Tested on and compatible with:

Operating Systems

- ▲ Microsoft Windows 2000 Server with Service Pack 4
- ▲ Microsoft Windows Server 2003, Release 2 with Service Pack 1
- ▲ Windows Server 2008
- ▲ Microsoft Windows 2000 with Service Pack 4
- ▲ Microsoft Windows XP with Service Pack 2
- ▲ Microsoft Windows Vista with Service Pack 2

Browsers

- ▲ Microsoft Internet Explorer 6.0 or later (128-bit cipher strength required)
- ▲ Netscape Navigator 4.2 or later (requires included PKCS #11 plug-in)
- ▲ Mozilla Firefox 1.0 or later (requires included PKCS #11 plug-in)
- ▲ Apple Safari 3.1.1 or later

E-Mail Applications

- ▲ Microsoft Outlook 2002 or later
- ▲ Microsoft Outlook Express 6.0 or later
- ▲ Netscape Communicator 4.2 or later (requires included PKCS #11 plug-in)
- ▲ Mozilla Thunderbird 1.0 or later (requires included PKCS #11 plug-in)
- ▲ Compatible with other applications using Microsoft CryptoAPI or PKCS #11

SPYRUS, Inc.



For additional details about SPYRUS products, visit www.spyrus.com or contact us at:

- ▲ USA +1 408 392-9131 info@spyrus.com
- ▲ Australia +61 7 3220-1133 info@spyrus.com.au



©2006-2010 SPYRUS, Inc. All rights reserved. SPYRUS, the SPYRUS logos, En-Sign, Security to the Edge, Suite B On Board, Rosetta, Hydra Privacy Card, Hydra PC, and LYNKS are either registered trademarks or trademarks of SPYRUS in the United States and/or other countries. All other trademarks are the property of their respective owners. Individual SPYRUS products may embody technology protected by one or more of the following patents or patent applications: U.S. Pat. Nos. 7,380,140 6,088,802; 6,003,135; 6,981,149; 5,761,305; 5,889,865; 5,896,455; 5,933,504; 5,999,626; 6,122,736; 6,141,420; 6,336,188; 6,487,661; 6,563,928; 6,618,483, U.S. Pat. Appl. Ser. Nos. 60/886,087; 61/043,118; 12/126,759; 09/434,247; 09/558,256; 09/942,492; 10/185,735; Can. Pat. Appl. Ser. Nos. 2176972; 2176866; 2202566; 2174261; 2155038; 2174260; E.P. Pat. Appl. Ser. No. 96201322.3; 97106114.8; 96105920.1; 95926348.4; 96105921.9; PCT/US08/51729.